

# STARON

Solid Surfaces  
[www.Staron.com](http://www.Staron.com)

**staron**<sup>®</sup>  
Solid Surfaces

**LOTTE CHEMICAL CALIFORNIA INC.**

6 Centerpointe Dr. Suite 100 La Palma, CA 90623, U.S.A.  
Tel. +1-800-795-7177

Copyright © 2022 LOTTE CHEMICAL Co., Ltd.  
Printed in KOREA

**staron**<sup>®</sup>  
Solid Surfaces



# STRETCH YOUR IMAGINATION WITH STARON FOR INFINITE POSSIBILITIES.

## WHY STARON ?

Staron® solid surface materials feature dimensional flexibility and low maintenance requirements. The non-porous, ultra-hygienic, and remarkably durable Staron surfaces are ideal for a multitude of interior applications, from healthcare facilities to retail and residential settings. Engineered in a wide assortment of colors and patterns, popular options range from the Tempest Collection with near-transparent gemstone textures, to the Supreme Collection with veined patterns of timeless look of natural marble.



### RELIABLE PERFORMANCE

- Cutting-edge technology sets a new standard in surface
- inconspicuous repairment available for its homogenous composition



### HYGIENIC SURFACE

- Non-porous surface inhibits growth of mold or bacteria
- Resistant to heat and abrasion
- Refurbishment to a new condition available



### DIMENSIONAL FLEXIBILITY

- Thermo-formable into three-dimensional shapes
- Excellent workability for unlimited design possibilities



### INFINITE RANGE OF COLORS

- Over 150 color options ranging from natural to vivid
- Ongoing collaboration with color trend experts to stay commercially relevant



### IMPERCEPTIBLE SEAMS

- Consistent color and texture on every sheet provides a smooth and seamless surface
- Installed without gaps, crevices, or obvious joint-lines



### TRANSLUCENCY

- Creative back-lighting effects via diversified material thickness, allowing transmission from low-energy light source



### GLOBAL NETWORK

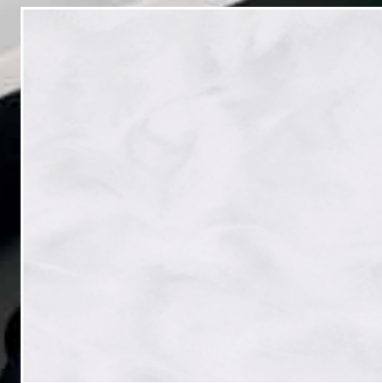
- Regional branch offices and worldwide product distribution networks



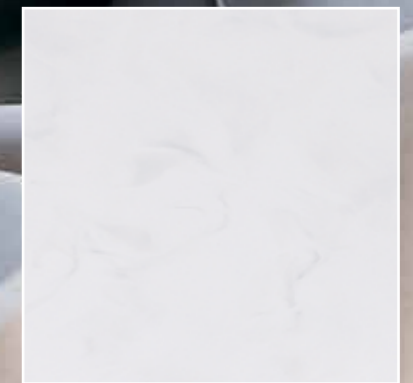
### RELIABLE QUALITY

- Advanced quality control policy and a commercial 10-year warranty
- Certified eco-friendly by Greenguard and Scientific Certification System

New  
Supreme

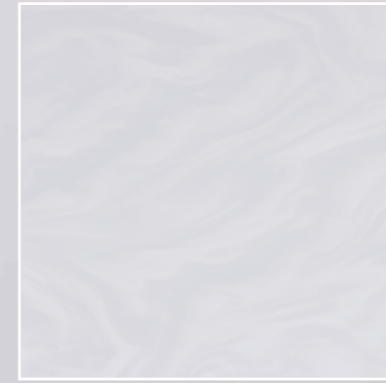


**Downy Dove** SP105



**Downy White** SF100

New  
Supreme



**Snowfall** VS324



**Granville** MGO30



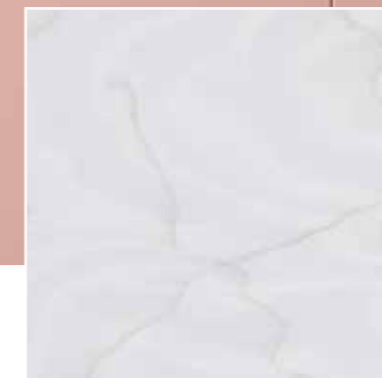
New  
Supreme



Latte Cream



Latte Cream VL343



Rotor Cloud VR322



Arctic White VA311



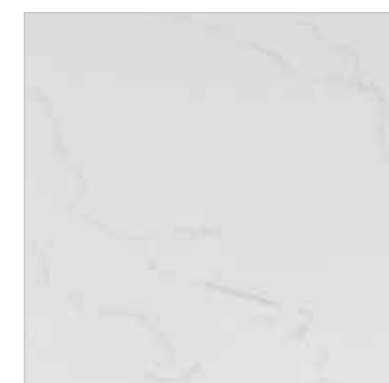
Morning Sky



**Cotton White** VC110



**Beige Granite** VB172



**Morning Sky** VM114



**Urban Grey** VU127

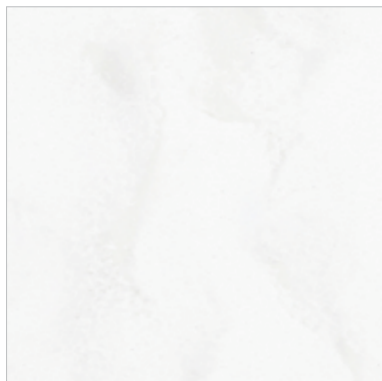
Supreme



**Cloudbank** VC118



**Ocean View** VO171



**Delphi** VD111



Supreme



**Dandelion** VD175



**Loam** VL155



**Magnolia** VM143



**Natural Bridge** VN144





Supreme



**Dawn** VD126



**Ash Concrete** VA129



**Noir Concrete** VN180

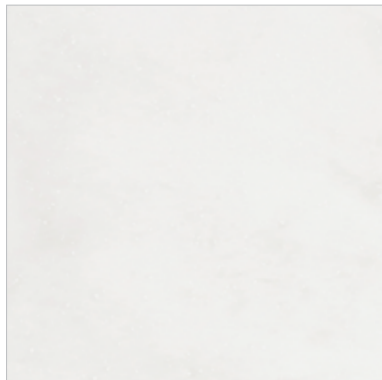


Ash Concrete

Supreme



**Flux** VF113

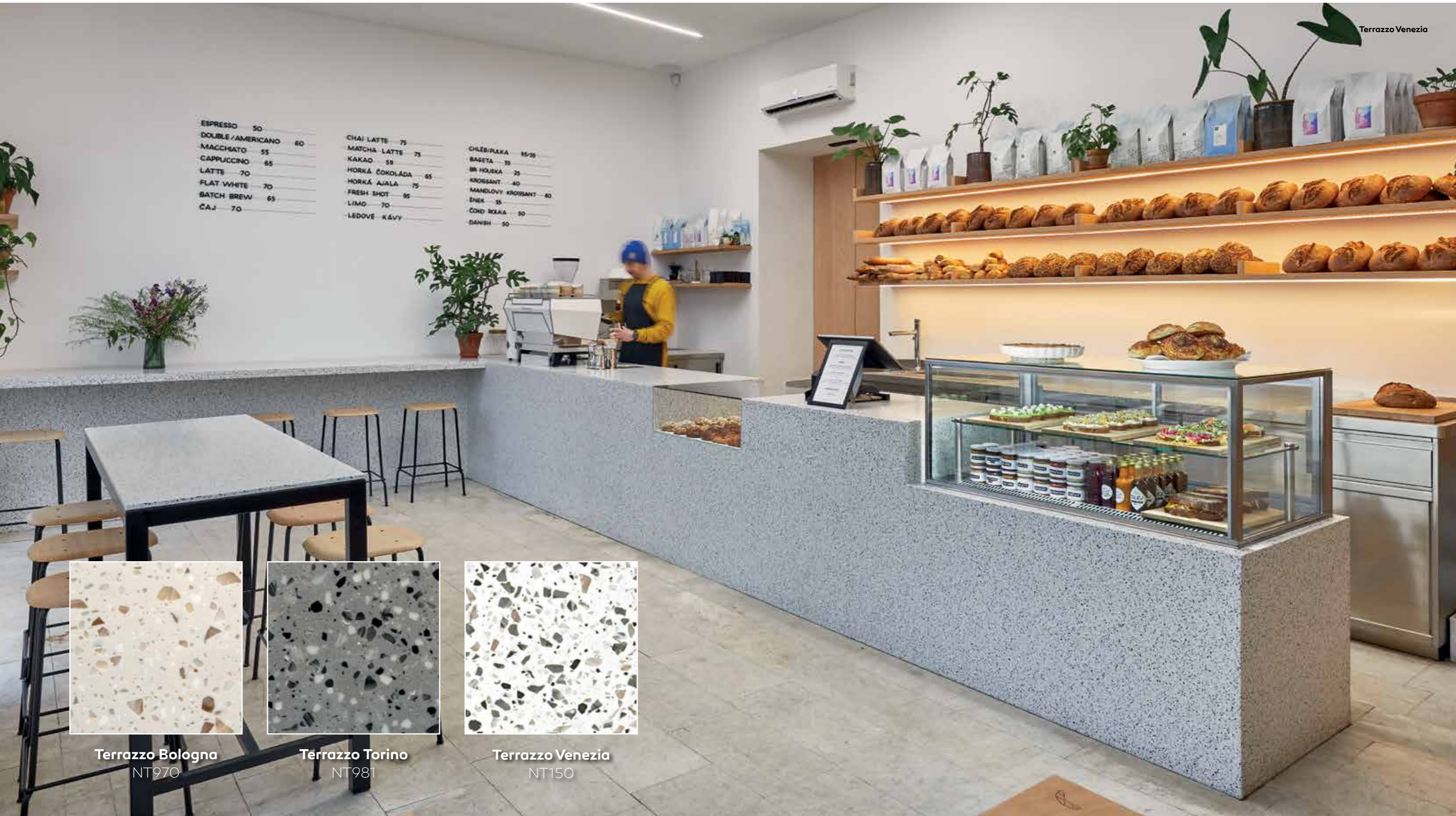


**Tranquil** VT115



**Reno** VR184

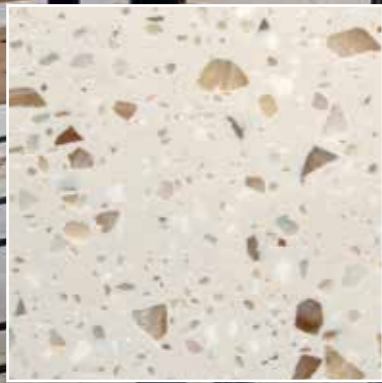




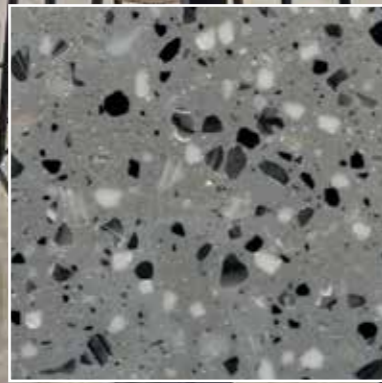
ESPRESSO 50  
DOUBLE / AMERICANO 60  
MACCHIATO 55  
CAPPUCCINO 65  
LATTE 70  
FLAT WHITE 70  
BATCH BREW 65  
ČAJ 70

CHAI LATTE 75  
MATCHA LATTE 75  
KAKAO 50  
HORKÁ ČOKOLÁDA 65  
HORKÁ AJALA 75  
FRESH SHOT 95  
LIMO 70  
LEDOVÉ KÁVY

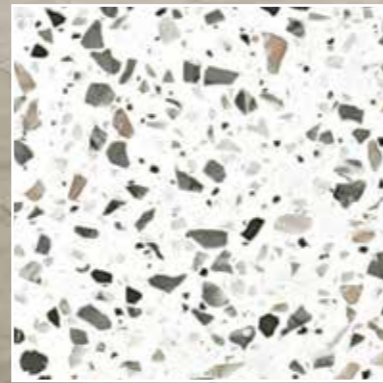
CHLÉBÍ/PÁKA 95/95  
BAGETA 55  
BR. HOUSKA 25  
KROSBANT 40  
MANDLOVÝ KROSBANT 60  
ŠNEK 55  
ČOND. ROLKA 50  
DANISH 50



**Terrazzo Bologna**  
NT970



**Terrazzo Torino**  
NT981



**Terrazzo Venezia**  
NT150

Quarry



**NEW**  
**Quarry Greige** QG229



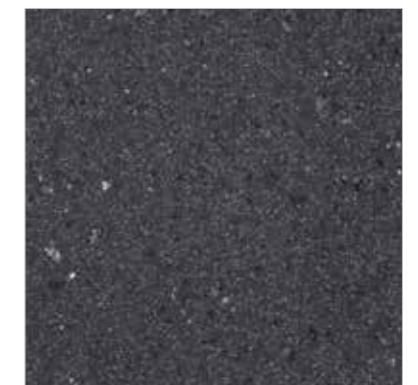
**Mosaic Dalmatian**  
QD212



**Quarry Oyster**  
TO310



**Quarry Ridge**  
QR278



**Quarry Starred(N)**  
QS288



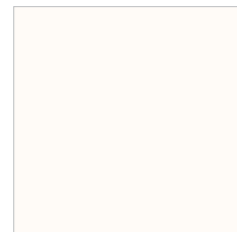
**Mosaic Nimbus**  
QN287

Solid

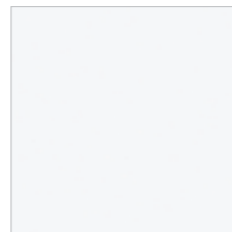
Forest



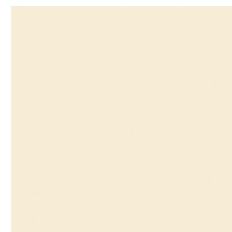
NEW



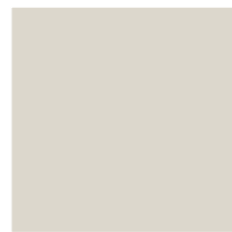
**Winter Light**  
SW017



**Quasar White**  
SQ019



**Ivory**  
SI040



**Champagne**  
SC040



**Tusk**  
ST015



**Cave**  
SC089



**Forest**  
SF061



**Ultramarine**  
SU067



**Piano Black**  
GP790

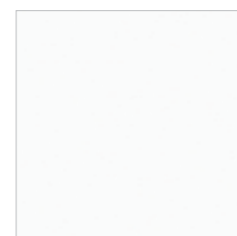


**Moonstone**  
SM080

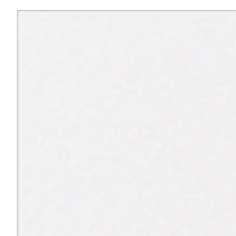
Exterior wall  
Cladding



Plumeria House  
Bright White  
Bangkok, Thailand



**Bright White**  
BWO10



**Sanded Icicle**  
SI414



**Aspen Snow**  
AS610



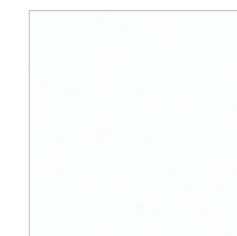
**Sanded White Pepper**  
WP410



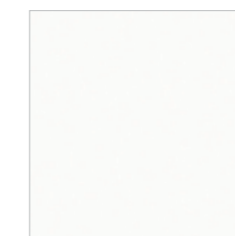
**Sanded Vermillion**  
SV430



**Sanded Sahara**  
SS440



**Pearl**  
SPO11



**Pure white**  
SPO16

# Ultra-Hygienic Material Solution for Healthcare

**evermoin**

*The healthiest choice for your design*

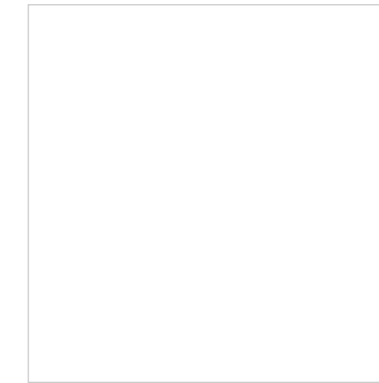
evermoin® Ultra-Hygienic material/surface from staron® can be applied to almost any interior space within a healthcare facility. Imagine casework, work-stations and wall-cladding in a functional and renewable material that is durable as well as ultra-hygienic.

Achieve the perfect blend of simplicity in design with an ultra-hygienic surface that is engineered for a healthier life.

**NEW**







*Supreme* **Granville** MGO30



**Angel White** MAO20






## Benefit of evermoin®

 <p><b>Ultra-Hygienic</b></p> <p>Speedy ultra-hygienic effect and action on representative bacteria and fungi</p>	 <p><b>Durability</b></p> <p>Excellent Ultra-Hygienic retention and Confirmed quality on stability and durability</p>	 <p><b>Safety</b></p> <p>Material certification harmless to human body and environment (EPA, NSF, FDA)</p>	 <p><b>Eco-friendly</b></p> <p>Achieved SCS RECYCLED CONTENT CERTIFICATION which demonstrates our commitment to conserving natural resources. [SCS Recycle 6%]</p>
---	---	--	--



## Safety Properties

Obtained certification, such as Japan SIAA, US NSF, and FDA, that guarantees sanitary safety and reliability to be harmless to human environments.

Harmless to human body			Safe for food contact	Eco-friendly
 <p><b>SIAA</b> Society of International sustaining growth for Ultra-Hygienic Articles</p>	 <p><b>EPA</b> US Environmental Protection Agency</p>	 <p><b>FDA</b> US Food &amp; Drug Administration</p>	 <p><b>NSF</b> National Sanitation Foundation</p>	 <p><b>Eco-Friendly</b> SCS Global Services</p>

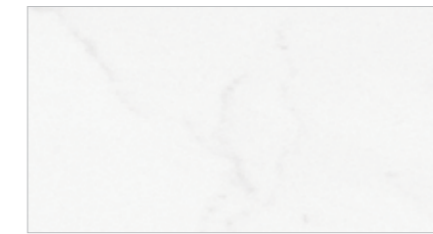




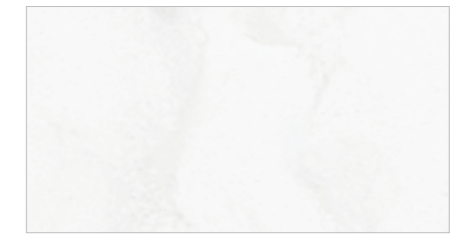
☀ Translucent   🛡 Ultra-Hygienic   🌿 Exterior Material  
🔥 Flame Retardant   🔄 Super Flex   ♻ Eco-Friendly



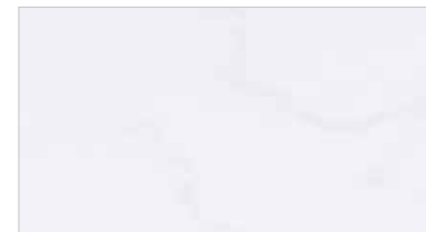
**Arctic White** VA311



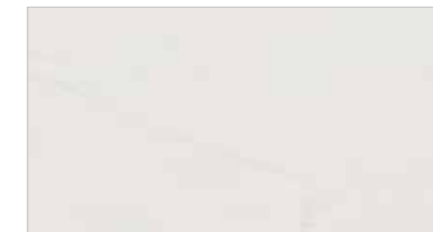
**Morning Sky** VM114



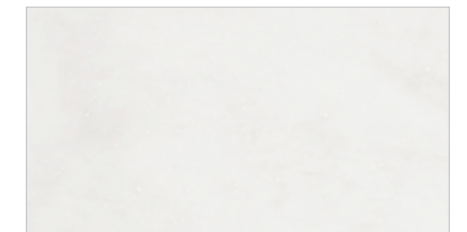
**Delphi** VD111



**Cotton White** VC110



**Beige Granite** VB172



**Tranquil** VT115



**Magnolia** VM143



**Reno** VR184



**Cloudbank** VC118

# COLORS OF STARON

## SUPREME



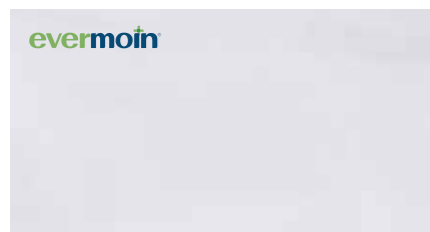
**NEW Downy Dove** SP105



**NEW DownyWhite** SF100



**NEW Snowfall** VS324



**NEW Granville** MGO30



**NEW Rotor Cloud** VR322



**NEW Latte Cream** VL343



**Ocean View** VO171



**Flux** VF113



**Natural Bridge** VN144



**Dawn** VD126



**Dandelion** VD175



**Urban Grey** VU127



**Ash Concrete** VA129



**Loam** VL155



**Noir Concrete** VN180



## TEMPEST



**Coconut** FC112



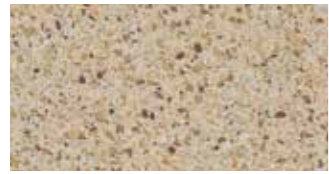
**Peak** FP100



**Confection** FC116



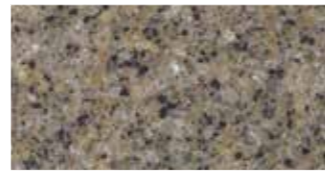
**Horizon** FH114



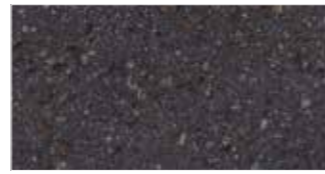
**Caraway** FC155



**Glimmer** FG144



**Whippoorwill** FW145



**Igneous** FI187

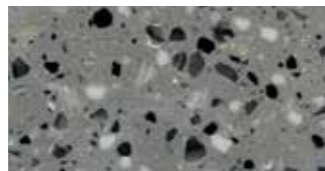


**Radiance(Shimmer)**  
FR148

## TERRAZZO



**Terrazzo Bologna**  
NT970



**Terrazzo Torino** NT981

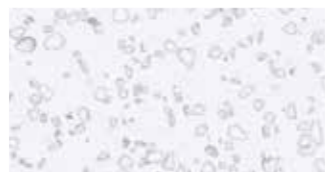


**Terrazzo Venezia** NT150

## QUARRY



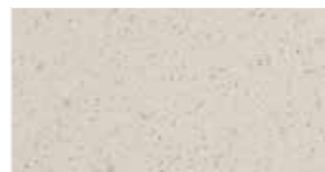
**NEW Quarry Greige** QG229



**Mosaic Dalmatian** QD212



**Quarry Oyster** TO310



**Quarry Ridge** QR278

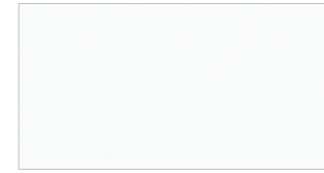


**Quarry Starred(N)** QS288

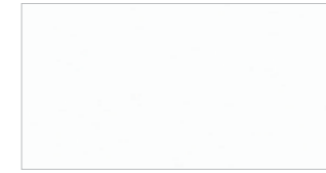


**Mosaic Nimbus** QN287

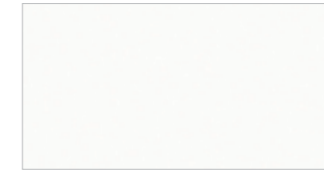
## SOLID



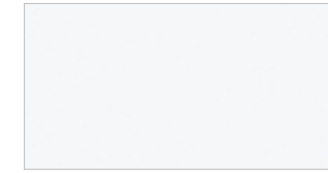
**Bright White** BW010



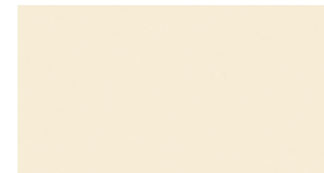
**Pearl** SPO11



**Pure white** SPO16



**Quasar White** SQ019



**Ivory** SIO40



**Ultramarine** SU067

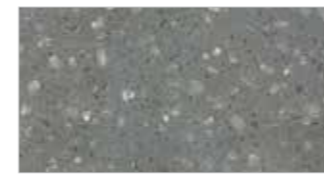


**Forest** SF061



**Piano Black** GP790

## PEBBLE



**NEW Collina Urbanity**  
PU886



**Pebble Frost** PF812



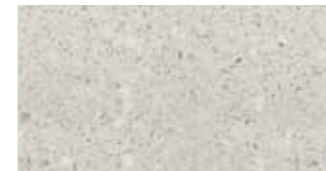
**Pebble Swan** PS813



**Pebble Saratoga** PS820



**Pebble Chiffon** PC842



**Pebble TeaRose** PT845



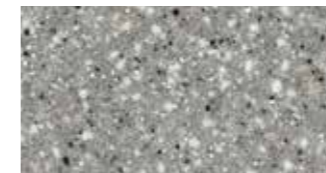
**Pebble Gold** PG840



**Pebble Seastar** PS843



**Pebble Boulder** PB852



**Pebble Grey** PG810



**Pebble Blue** PB870

## METALLIC



**Metallic Yukon** EY510

## SANDED



**Sanded Icicle** SI414



**Sanded Cream** SM421



**Sanded Birch** SB412



**Sanded White Pepper** WP410



**Sanded Linen** SL443



**Sanded Sahara** SS440



**Sanded Cornmeal** SC433



**Sanded Gold Dust** SG441



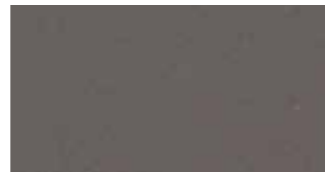
**Sanded Vermillion** SV430



**Sanded Grey** SG420



**Sanded Tundra** ST482



**Sanded Taupe** ST486



**Sanded Mocha** SM453



**Sanded Chestnut** SC457



**Sanded Onyx** SO423

## ASPEN



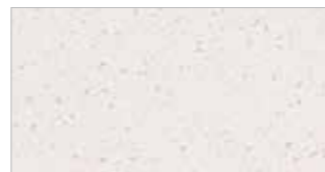
**Aspen Snow** AS610



**Aspen Eggshell** AE642



**Aspen Lily** AL645



**Aspen Alder** AA625



**Aspen Cliff** AC652



**Aspen Pepper** AP640

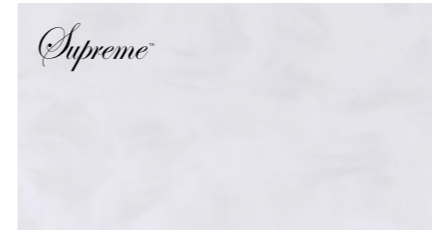


**Aspen Brown** AB632

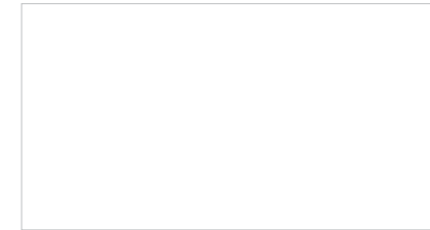


**Aspen Concrete** AC629

## EVERMOIN (ULTRA-HYGIENIC)



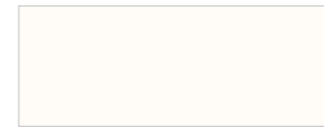
**NEW Granville** MGO30



**Angel White** MAO20

## PROJECT COLORS (SPEC)

Please consult with a local authorized distributor for minimum order and lead time.



**NEW Winter Light** SW017



**Champagne** SCO40



**Tusk** ST015



**Moonstone** SM080



**Cave** SCO89



**NEW Pebble Cepheus** PC815



**Pebble Iceland** PI814



**Pebble Straw** PS819



**Pebble Crema** PC819



**Sanded Loft** SLO71



**Sanded Lavachip** SL418



**Aspen Altai** AA615



**Aspen Crema** AC673



**Aspen Attica** AA685

## Eco-Friendly Materials, Staron

Printed representation of colors may vary from actual samples.

Please review actual sample prior to selection.

• To view new colors in greater detail, please visit [www.staron.com](http://www.staron.com)

Translucent

Exterior Material

Super Flex

Ultra-Hygienic

Flame Retardant

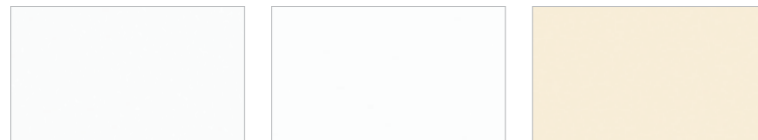
Eco-Friendly



# SINKS & BOWLS

Staron solid surface sinks and bowls can be installed together with the all-acrylic sheet to achieve a seamless appearance and more smooth and polished fit. The continuous transition from sink to surface leaves no seams for bacteria or mold to accumulate and grow, making Staron's non-porous solid surfaces as the most desirable choice for hygienic interior commercial applications. Staron sinks come in five following colors in sixteen popular models:

## COLOR OPTIONS

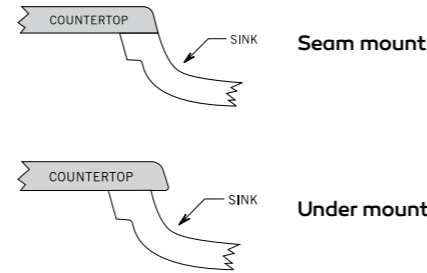


**Bright White** BW010    **Pearl** SPO11    **Ivory** SIO40

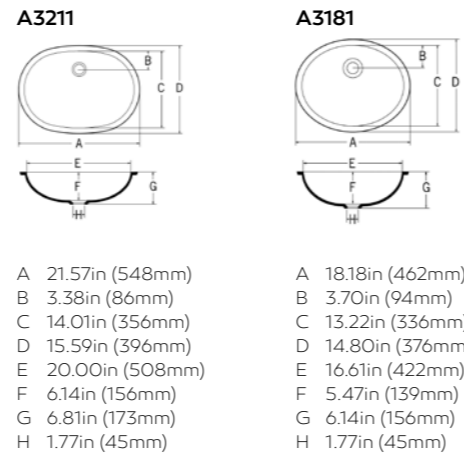


**Pure white** SPO16    **Quasar White** SQ019

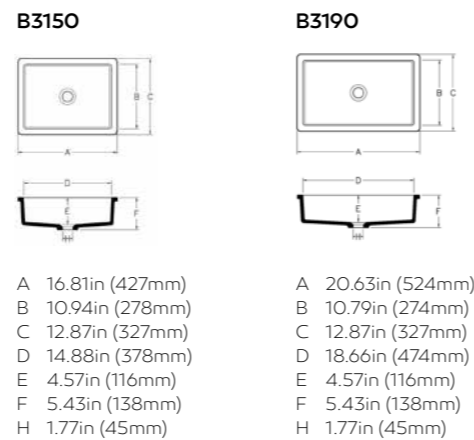
## MOUNTING OPTIONS



## LAVATORY SINKS / BASINS

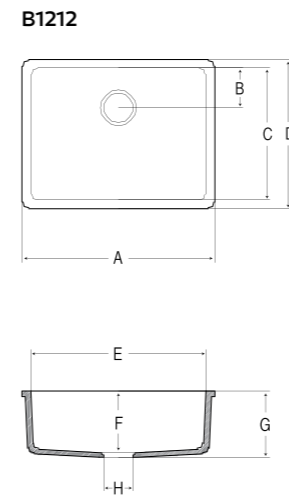


**A3211**    **A3181**  
 A 21.57in (548mm)    A 18.18in (462mm)  
 B 3.38in (86mm)    B 3.70in (94mm)  
 C 14.01in (356mm)    C 13.22in (336mm)  
 D 15.59in (396mm)    D 14.80in (376mm)  
 E 20.00in (508mm)    E 16.61in (422mm)  
 F 6.14in (156mm)    F 5.47in (139mm)  
 G 6.81in (173mm)    G 6.14in (156mm)  
 H 1.77in (45mm)    H 1.77in (45mm)

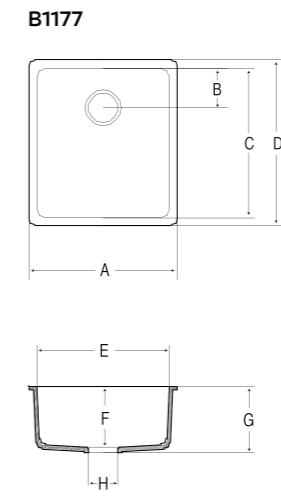


**B3150**    **B3190**  
 A 16.81in (427mm)    A 20.63in (524mm)  
 B 10.94in (278mm)    B 10.79in (274mm)  
 C 12.87in (327mm)    C 12.87in (327mm)  
 D 14.88in (378mm)    D 18.66in (474mm)  
 E 4.57in (116mm)    E 4.57in (116mm)  
 F 5.43in (138mm)    F 5.43in (138mm)  
 H 1.77in (45mm)    H 1.77in (45mm)

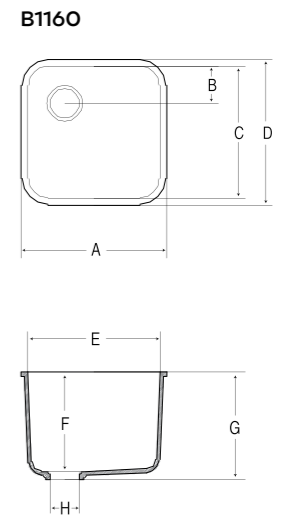
## NEW



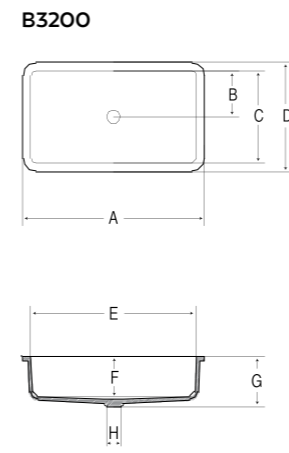
**B1212**  
 A 22.87in (581mm)  
 B 4.8in (122mm)  
 C 15.74in (400mm)  
 D 17.75in (451mm)  
 E 20.86in (530mm)  
 F 7.28in (185mm)  
 G 7.87in (200mm)  
 H 3.54in (90mm)



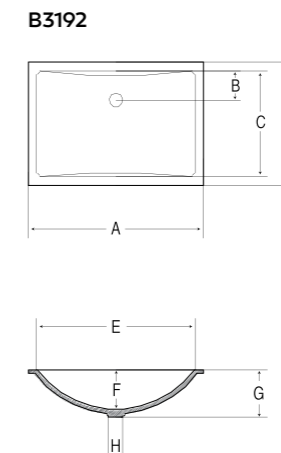
**B1177**  
 A 17.71in (450mm)  
 B 4.72in (120mm)  
 C 17.71in (450mm)  
 D 19.68in (500mm)  
 E 15.74in (400mm)  
 F 7.28in (185mm)  
 G 7.87in (200mm)  
 H 3.54in (90mm)



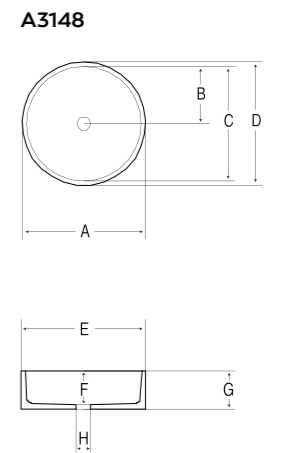
**B1160**  
 A 17.32in (440mm)  
 B 4.4in (112mm)  
 C 15.74in (400mm)  
 D 17.32in (440mm)  
 E 15.74in (400mm)  
 F 11.81in (300mm)  
 G 12.79in (325mm)  
 H 3.54in (90mm)



**B3200**  
 A 21.65in (550mm)  
 B 5.51in (140mm)  
 C 11.02in (280mm)  
 D 12.99in (330mm)  
 E 19.68in (500mm)  
 F 4.72in (120mm)  
 G 5.51in (140mm)  
 H 1.73in (44mm)

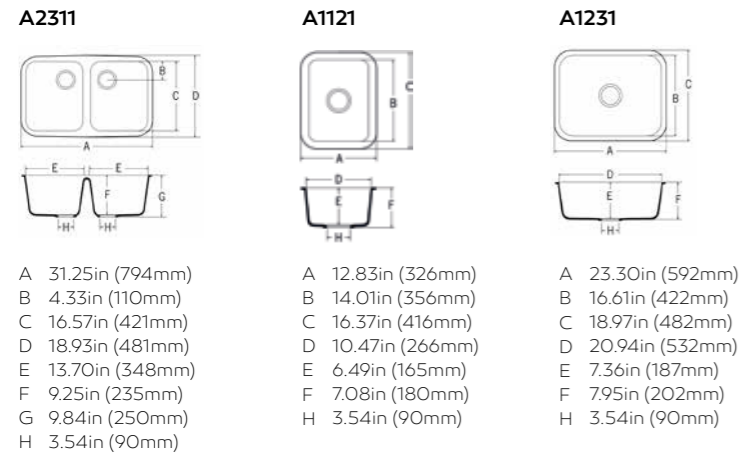


**B3192**  
 A 20.86in (530mm)  
 B 3.5in (89mm)  
 C 12.59in (320mm)  
 D 14.56in (370mm)  
 E 18.89in (480mm)  
 F 4.76in (121mm)  
 G 5.55in (141mm)  
 H 1.73in (44mm)

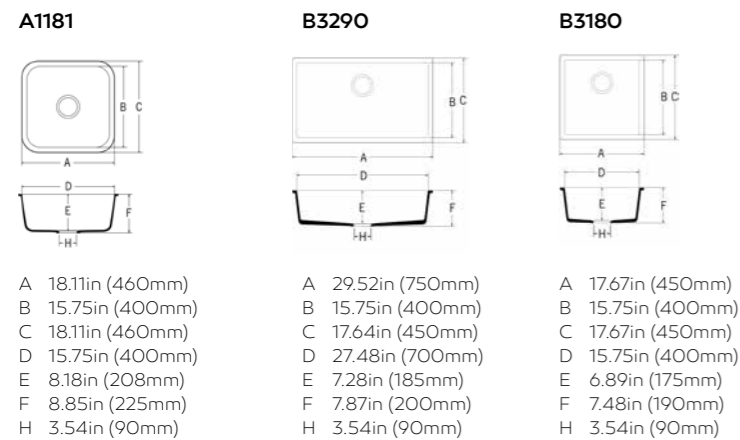


**A3148**  
 A 14.8in (376mm)  
 B 6.88in (175mm)  
 C 13.77in (350mm)  
 D 14.8in (376mm)  
 E 13.77in (350mm)  
 F 3.81in (97mm)  
 G 4.52in (115mm)  
 H 1.73in (44mm)

## KITCHEN / UTILITY SINKS



**A2311**    **A1121**    **A1231**  
 A 31.25in (794mm)    A 12.83in (326mm)    A 23.30in (592mm)  
 B 4.33in (110mm)    B 14.01in (356mm)    B 16.61in (422mm)  
 C 16.57in (421mm)    C 16.37in (416mm)    C 18.97in (482mm)  
 D 18.93in (481mm)    D 10.47in (266mm)    D 20.94in (532mm)  
 E 13.70in (348mm)    E 6.49in (165mm)    E 7.36in (187mm)  
 F 9.25in (235mm)    F 7.08in (180mm)    F 7.95in (202mm)  
 G 9.84in (250mm)    H 3.54in (90mm)    H 3.54in (90mm)



**A1181**    **B3290**    **B3180**  
 A 18.11in (460mm)    A 29.52in (750mm)    A 17.67in (450mm)  
 B 15.75in (400mm)    B 15.75in (400mm)    B 15.75in (400mm)  
 C 18.11in (460mm)    C 17.64in (450mm)    C 17.67in (450mm)  
 D 15.75in (400mm)    D 27.48in (700mm)    D 15.75in (400mm)  
 E 8.18in (208mm)    E 7.28in (185mm)    E 6.89in (175mm)  
 F 8.85in (225mm)    F 7.87in (200mm)    F 7.48in (190mm)  
 H 3.54in (90mm)    H 3.54in (90mm)    H 3.54in (90mm)

# PERFORMANCE PROPERTIES

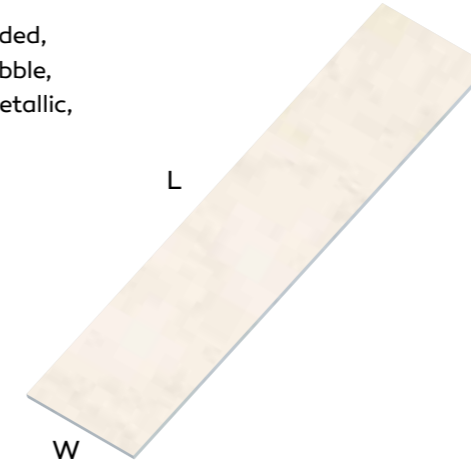
The information contained herein is provided by LOTTE CHEMICAL Co., Ltd. and subsidiaries and affiliates for information purposes only and should be used by individuals with technical experience and knowledge in the area. LOTTE CHEMICAL does not make any representation or warranties of the usefulness or expected result of the information, and does not assume any responsibility whatsoever related to the use of the information. Exclusion of the implied warranties may not apply in certain jurisdictions.

PROPERTY	TEST RESULT	TEST PROCEDURE
Tensile strength	6,000 psi	ASTM D 638
Tensile modulus	600,000 psi	ASTM D 638
Flexural strength	10,000 psi	ASTM D 790
Flexural modulus	1,000,000 psi	ASTM D 790
Elongation	0.5%	ASTM D 638
Hardness	92 Rockwell "M" Scale 65 Barcol impressor	ASTM D 785 ASTM D 2583
Thermal expansion	2.0x10 <sup>-5</sup> in/in F°	ASTM D 696
Gloss (60 Gardner)	Between 5-20	NEMA LD-3
Color stability	No change-200hrs	NEMA LD-3
Stain resistance	Passed Rating 41	ANSIZ 124
Abrasion resistance	Passed	ANSIZ 124
Boiling water surface resistance	No effect	NEMA LD-3
High temperature resistance	No effect	NEMA LD-3
IZON Impact resistance (Notched)	0.28ft. lbf/in	ASTM D 256
Ball drop 1/2" (12 mm) sheet	144"w/1/2lb ball No failure	NEMA LD-3
Fungi and Bacterial resistance	No growth	ASTM G 21, G22
Specific gravity Solid colors Patterened colors	1.72 1.69	ASTM D 792
Water absorption	0.04%, (1/2", 24hrs) 0.11%, (1/8", 24hrs)	ASTM D 570
Flammability Flame spread Smoke density	Class A/Class 1 10 10	UBC 8-1 ASTM E 84 ASTM E 84
Radiant heat resistance	No visual effect	NEMA LD-3
Toxicity	84.4g (Solid color) 81.8g (Patterened color)	Pittsburgh test protocol (LC50 Test)

## PRODUCT DIMENSIONS

### COLLECTION

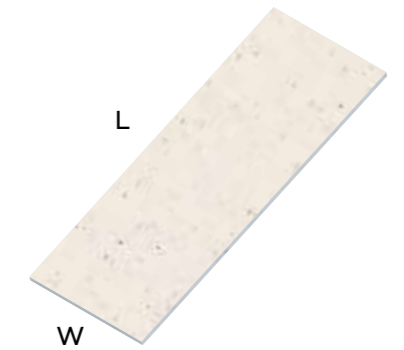
Solid, Sanded,  
Aspen, Pebble,  
Quarry, Metallic,  
Tempest,  
Supreme



THICKNESS	WIDTH	LENGTH
mm	mm	mm
12 (1/2")	760 (30")	3,680 (145")

### COLLECTION

Solid, Sanded,  
Aspen, Metallic



THICKNESS	WIDTH	LENGTH
mm	mm	mm
6 (1/4")	760 (30")	2,500 (98")

- Bright White with wider widths is available. Widths of 1350mm and 930mm with the thickness of 6mm, 9mm and 12mm are available.
- Panel thicknesses of 9mm and 19mm available on request.
- 6mm thickness sheet is not recommended for horizontal application.
- If there is a specific dimension or size that is required for a particular project, please consult with the local agent or distributor.

## STARON® 10-YEAR LIMITED WARRANTY

The 10-year warranty applies to Staron, Tempest and Supreme Collection products that have been installed in an interior, commercial-use or residential application.

For more details, please consult with your Staron products distributor, or visit [www.staron.com](http://www.staron.com)

## DISCLAIMER

The information contained herein is provided by LOTTE CHEMICAL Co., Ltd. and LOTTE Chemical California INC. for information purposes only and should be used by individuals with technical experience and knowledge in the area. LOTTE CHEMICAL Co., Ltd. does not make any representation or warranties of the usefulness or expected result of the information, and does not assume any responsibility whatsoever related to the use of the information. Exclusion of the implied warranties may not apply in certain jurisdictions. LOTTE Chemical California INC. is a subsidiary of LOTTE CHEMICAL Co., Ltd.